

Newsletter



AUGUST (?) IN-CLUB SHOW TONIGHT

Tonight is when we show just how far our gardens are ahead of a normal July garden. For so many of us the situation is "That is finished...that is finished...." Hopefully you also have been saying "...is in bloom...usually it blooms mid-August". When drawing up the show schedule, we include classes that are pretty wide because we just never know how the weather will dictate the maturity of our garden plants. Thank you for bringing in your entries for us to enjoy.

Introducing our new exhibit slip:

The supply of our old slips was diminishing. Instead of just getting more of the same printed, we re-designed the slip to match our show. It is very self explanatory. When you set out your exhibits check that all spaces, except for the judge's comments, are filled. The number used when voting for best of show is very explicit.

Vote for "Best of Show":

Everyone in attendance gets to vote for their favorite exhibit in each of the general categories. You will have a different colored ballot for each category.

- Pink for Cut Flowers: Classes 1 to 17
- Lime Green for Vegetables, Herbs & Fruits: Classes 18 to 29
- Deep Orange for Floral Art: Classes 30 to 34

The ballot color corresponds with the class table signs and the ballot box lid. To vote for your favorite, using the appropriate ballot, write its exhibit number (nothing else!) on the ballot and put the ballot in the appropriate box. If you use the wrong colored ballot, your vote will be invalid and deleted. Voting closes at the end of refreshments.

TREASURER'S REPORT - June

Total Revenues: \$ 163.30
Total Expenses: \$ 1315.23
(includes \$850 deposit for Christmas caterer) See the bulletin board for Ellen's detailed report.

Best of Show Prizes:

The "Best of Show" winner in each overall category will receive a rosette ribbon plus a Sheaffer pen. Patrick Clark, Audrey's neighbor & Little Cat's owner, donated the pens.

Individual class Placement Ribbons:

Jennifer Zuk is once again our judge. She will select the First, Second & Third place entries in each class. While she is judging, please do not touch any of the exhibits and give her lots of room to do her job. Please do not talk with her until after judging is complete. Thank you Jennifer.

WATERING RESTRICTIONS:

As you probably know, we are now at Stage 2 in watering restrictions. Lawns can only be watered between 4 and 9am, one morning a week: odd numbered residences on Thursday; even numbered residences on Mondays. Hand watering of trees, plants and vegetables can be done at any time. More strict regulations will become law if the drought continues. Thank you for being responsible gardeners.

Contacts

Julia Goulden-President

604-526-1140 or
julia@newwesthortsociety.org

Lorna Cloutier - Vice President

604-524-1942 or
lorna@newwesthortsociety.org

Ellen Berg-Treasurer - 604-525-7827

or ellen@newwesthortsociety.org

Lea McDonald - Contests, Show

604-942-9416

Audrey Barnes - Contests, Show,

Tour & Picnic

604-526-8284 (Before 8pm) or

audrey@newwesthortsociety.org

Dan Tessaro: At Meeting Sale

604-563-3361

Richard Harrison: Seed Exchange

604-544-2468 or

richard@newwesthortsociety.org

Tonight's Meeting

Tuesday, July 14, 7:30pm

Annual In-Club Show
Guest Speaker: Claude Le Doux
answering our gardening questions.
Thank you, Claude

Mark Your Calendar

NWHS Garden Tour & Potluck Picnic:
Sat, July 18. Tour 1pm, Picnic 4:30pm,
See article

Darts Hill Summer Celtic Music Concert, Mon, July 27, 6:30-8pm,
Garden opens at 5pm, 16th Ave. and
170th St., South Surrey

NWHS Regular Meeting

Tues, Aug 11, 7:30
Speaker: Karen Myskiw
Topic: Kitchen Garden Design

Royal City Farmer's Market

Every Thur., 3pm-7pm, Tipperary Park
Check www.rcfm.ca for more details

Port Royal Community Garden Society and Artists in the 'Boro

Annual Art in Bloom and English Tea Party, Sun, Aug 9. Art Display: 11am -5pm. Tea & Goodies: Noon to 3pm
83 Star Crescent, Queensborough
Live music - Free Admission

GOT SEEDS?

The box for Seed Exchange donations is at the podium this evening. Next month it will return to the table in front of the fireplace.

SHARPENING WITH HENK:

The people who signed up for the workshop last month really got a deal. Just learning the elastic band trick was worth the \$5 fee. He gave us loads of tips, offered hands-on practice and sharpened innumerable tools.

PLANT A ROW, GROW A ROW:

Please deliver your garden (or purchased) produce to the main entrance of St. Thomas More Collegiate (7450 12th Ave, Burnaby) between 8:30 and 9:15am on Sunday mornings. The clients of the New Westminster Food Bank thank you.

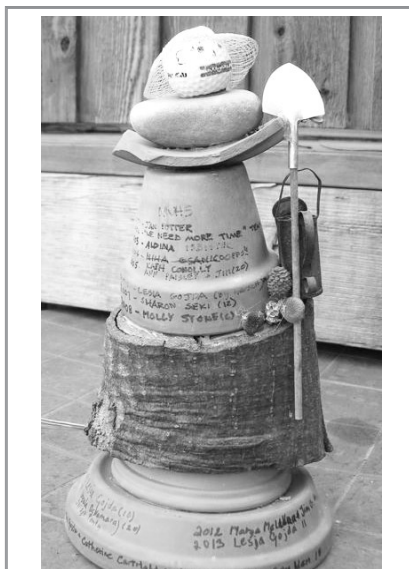
New Westminster Horticultural Society July 2015

CLUB GARDEN TOUR AND POT-LUCK PICNIC THIS SATURDAY

Wow! Can you believe it?! The heat wave has broken! The weather for the 18th is supposed to be cloudy with sunny breaks, 22C. Let's keep our fingers crossed the prediction holds. That would be perfect! Whatever the weather, both events are rain or shine. Plan to attend one or both events.

The Tour:

All NWHS members and their adult friends are invited to enjoy our garden tour. The gardens will be visited in sequence according to a time schedule & map. Your possession of the map is your ticket to be on the tour. There are no electronic versions. They are available tonight or through Audrey Barnes.



Will it be your name on the trophy this year?

THE GARDENS: Our tour this year stretches from Sapperton to the West End. We have five gardens. The three member gardens we have visited in prior years but each deserves another visit and re-look at their new-looks. The two non-member gardens will be delightful new surprises for you. We start at Michael Campbell's Edible Oasis, next to Royal Columbian Hospital. We then zip into Queens Park to visit Anne McNamara's garden. For many years, this was our picnic site. See it without tables and umbrellas. Then, it's to the Brow of the Hill to visit Ron Howe and Doug Braun's garden. After their 9th Street home was on the recent Heritage Home Tour, the word was "get that garden on our tour". Done! Terri

Clark-Kvelton's garden, with many garden projects now completed, near 12th St & 8th Ave is next. Finally we end at Elaine & Rob Carroll's in the West End: A garden built for trains—or is it, trains built for a garden? The itinerary allows a half hour visit at each garden and ample traveling time between the gardens. Remember this is a social event. It is not a race to see who gets to the next garden first. The tour starts at 1pm and ends at 4pm. Water will be available on tour in the rear of the Barnes' white Volvo wagon. Finally, thank you garden hosts—you are making our day.

TOUR COURTESY:

- Only adults on tour, no kids, no pets.
- Do not arrive earlier than the schedule states. The garden host may not be there or may be doing some final tweaking.
- Do not arrive after the end of the time allotted for a garden. If you get behind schedule, skip a garden.
- Do not leave a garden later than the allotted time. The garden host probably wants to join the tour.
- Obey parking restrictions—this is particularly important for the garden near Royal Columbian Hospital. Car pooling is strongly suggested.

BRING YOUR CAMERA:

Besides being a great time to get shots of your friends, during the tour you might just grab images for 3 of our photo contest categories: macro, colour (burgundy) and view of a NWHS member's garden. Only the 'visitor to the garden' category must be taken in your own garden.

The Picnic:

The pot-luck picnic is in the garden of Audrey & Steve Barnes, 117 Seventh Ave. We allowed a half hour between tour end and picnic start so you can whip home and collect your pot-luck offering. Although the picnic doesn't officially start until 4:30, you can arrive early if you like. Just don't expect everything completely set-up. At 4:30, our goal is to have the coffee hot. We will probably start eating just after 5:00. If you are arrive early, grab the Garden Stumps Quiz sheet and get started identifying the plants.

SETTING UP: If you would like to help set-up, we will be doing the majority of it at 11am—then final touches just before 4:30. At this point, it looks like we have enough umbrellas, tables & chairs. If the weather forecast turns to nasty, the loan of awnings would be most appreciated. If you have one or more, tell Audrey.

PICNIC SIGN-UP:

The "I will bring this for Pot-Luck" sign-up sheet is available tonight. Please indicate the number in your party and specifics of the dish you would like to bring. If there is some feature unique to your dish, such as it being gluten free, you can put that on the sheet if you like. More useful would be a small sign placed next to the dish on the pot-luck table. We expect about 60 people at the picnic. The size of your dish should be about the amount to serve 10 people as a side dish. At this point, we are heavy on salads and light on everything else, especially main dishes. The club will be supplying beverages: water, non-alcoholic punch, wine, coffee & tea. Audrey will have the sign-up sheet after the meeting. Please contact her for additions or changes. Thanks.

BRING TO THE PICNIC CHECK LIST:

- Pot Luck Offering in serving dish.
- Serving utensil.
- A plate, a knife and a fork.
- Put your name on everything you bring. It makes it easier to find who owns the items left behind.
- **DO NOT** bring a chair. We have loads. We still have not found the correct home for the green one left behind last year.



Henk giving Devona some sharpening pointers