



...AND CLUB ACTIVITIES CONTINUE...

Recently several members got to know other members while participating in organized club activities. The two botanical print workshops and the planting of the pollinator garden were not only rewarding as opportunities to create something but also as venues to forge friendships. In July, we have some big events: the July show at the meeting, the garden tour and the pot-luck picnic. You are invited to participate—lots of details in this newsletter on how. You'll be glad you did.

PRESIDENT'S CORNER by Lorna:

This is a beautiful/colourful time of year to take a walk through your neighbourhood. Make sure you keep your eyes open for the multitude of colours at various levels. Nature continues to put on a show. The tall flowering cherries, magnolias, lilacs, horse chestnuts and early native dogwoods may have just finished flowering but have been replaced by Korean white and pink dogwoods, hawthorn and Japanese snowbell. She fills the mid-levels with camellia, California lilac, rhododendron of many colours, azalea, early hydrangea, black elderberry, spirea, smoke bush, weigela, mock orange, ninebark, viburnum and roses. Next look a bit further down. You will see peonies, iris, calla lilies, alliums and other late spring bulbs. Don't forget to look right at the ground to see the colourful little poached egg plants. Not only will the colours enlighten your eyes but the scents will fill your lungs. No other time of year will give such pleasure to your senses.

NEXT MONTH'S PRESENTATION:

There is evil lurking in some gardens in Vancouver waiting to devastate your garden if it has a chance. Nicholas Wong, of the Invasive Species Council of BC will introduce the Japanese Beetle, a voracious eater of plant material recently discovered in Vancouver. He will provide background on the beetle's biology and the invasion of Vancouver, describe the preventative measures and eradication efforts underway and discuss what you can do to help stop the spread.

BOTANICAL PRINTING WORKSHOPS:

Down-right amazing! How could that leaf release that imprint of that colour on the cotton rag paper? That was the reaction of many of the 20 participants of the two sold-out workshops in botanical printing led by club member Terry Rammell. Sure, we had seen her samples but thought "yeah, but how many did she toss?" (Skeptics!) Following Terry's instructions we dutifully positioned our ferrous sulfate dipped leaves on our alum acetate soaked rag paper, covered them with the mulberry paper, spritzed them with the vinegar solution, clamped them between the tiles and waited for the 20 minutes for the sandwich to soak in the hot water bath. Then we unwrapped them with anticipation. It was miraculous. Everybody looking to see what the others had created. The most outstanding surprise was that pink dogwood flowers left a perfect image but yellow in colour. Amazing. Thank you, Terry, for introducing us to something new. There was some discussion of a fall workshop but it would need a large enclosed space as at that time of year, the open carport would be too cold.



Tonight's Meeting

Tues, June 11, 7:30pm

Speaker: Pam Erikson on "The Evolution of Erikson's Daylily Gardens & Perennials"

Sign-up for the pot-luck picnic. Offer your garden for our tour.

Mark Your Calendar

Denman Island Home & Garden Tour:

Sat-Sun, June 15-16

Info: www.denman-conservancy.org/home-and-garden-tour

Heritage Vancouver Garden Tour:

Sat-Sun, June 22-23, 10am-4pm

15 Gardens open for two days

Tickets \$35, for info visit www.heritagevancouver.org/garden-tour-2019

Plant a Row, Grow a Row Food Collection:

Every Sunday, starting June 23

8:30-9:15am

St. Thomas More Colligate entrance

7450 12th Ave, Burnaby

Garden grown (or store bought) food donations gladly accepted to help those in need.

Glenbrook Ravine Invasive Species Removal:

Sat, June 29, 10am-1pm

Meet on path in the middle of the ravine. Expect hard, but rewarding, work. Wear protective clothing as blackberries are evil.

Info: kylerroutledge@gmail.com

Erikson Daylily Gardens and Perennials Open House:

Sat-Sun, July 6-7, 10am-4pm

24642 – 51st Ave, Langley

We are treating this as a semi-club outing. (see article)

NWHS Regular July Meeting:

Tues, July 9, 7:30

Annual In-Club Show (see article)

Speaker: Nicholas Wong on "The Japanese Beetle, *Popillia japonica*, in Vancouver"

Picnic sign-up.

NWHS garden tour map/itinerary available.

NWHS Annual Garden Tour & Picnic:

Sat, July 13. Tour in afternoon, picnic in evening (see article)

New Westminster Horticultural Society June 2019

JULY SHOW: "TRY IT, YOU'LL LIKE IT!":

Participating in the July show is something like "Try it, you'll like it!" Not for you? Try it, you may become addicted. You will be surprised at how much more you enjoy your garden when you are anticipating a show entry. As you watch your plants you will see them go through many stages. Read the schedule. Check off what plants you are growing. Observe how they are maturing. When show time comes, collect your best. It is important to make sure the number of blooms, stems and such match what is in the schedule. Bring your exhibit in and wow everyone with what you grew. Don't let dastardly weather just before the show deter you from bringing in your entries. Everyone will be going through the same environmental disaster. It is a judged show (that's why there are exhibit rules—so judging can happen) but entries are judged against like entries. It is a "fun" judged event. Winning a ribbon is fun but the process of evaluating your plants progress and entering is more entertaining.

LET'S SEE A FULL SHOWBENCH IN JULY.

If you haven't yet picked up your show schedule, grab one in the foyer or at the fireplace table or email Audrey for an electronic version. Page one is the basic rules. Best to scan over them. A criteria of judged event is that there are rules. As mentioned before, check out the classes and match them to what you are growing. Monitor their progress and come July, select those closest to their prime. You can enter 2 exhibits in each class as long as they are botanically different. The schedule offers all sorts of hints of what "perfection" is for each class. The hints are to guide you in selecting your entries. It also states criteria for entering each class. The criteria must be complied with when you enter. If it says "3 stems", enter 3 stems—not 2, not 4. If your entry does not comply with the schedule, even though it will be lovely to view, it cannot be judged and will receive the dreaded "NAS" (Not As Scheduled) notation. If you have a query about the schedule, please contact Audrey. She will gladly answer your question.

Floral Art: Entering an exhibit in Floral Art takes more time (unless you consider growing time!) than entering one in the Flowers or Vegetables, Herbs & Fruits categories but it is so very rewarding to mull over the restrictions listed and create something. Not only

that, but you get to enjoy it at home for days afterward. One good thing about Floral Art, is that you don't have to grow the vegetative material you use. You can buy it! The best place is the Dollar Stores on 6th Ave. So... look at the classes early (as in "now"), mull over possibilities, refine your plans and then go for it. Have fun! Can't decide which idea to use, no problem. You can enter 2 entries in each class. Again, if you can't understand what the rules mean, contact Audrey.

Submitting your Exhibits: Entries must be on the showbench (i.e. display tables) by 7:25pm. Arriving with your exhibits, already in vases, ready for display, enhances a speedy and non-stress set-up. When you get to the Lodge (early, as there may be a crush of activity), pick up an exhibit slip for each of your exhibits at the sign-in table. Fill in the slip and place your exhibit in the appropriate location on the show table. If you need help, just ask. There will be copies of the schedule on hand for reference.

Placement Ribbons (1st, 2nd, 3rd):

Our judge, Jennifer Zuk, will be evaluating the entries in each class, comparing them to each other. It is up to her to decide which entry gets which ribbon. She may award a tie. Or, if the quality of the exhibits is poor, not award any ribbon(s). All placement winners will be announced in the August newsletter.

Members' Choice Awards: Everyone in attendance gets to vote for his/her favourite entry in the three overall categories: Flowers; Vegetables, Herbs & Fruits and Floral Art. Each winner will be presented with a rosette ribbon at the July meeting. Detailed instructions on how to vote will be in the July newsletter.



ERIKSON'S DAYLILY GARDENS & PERENNIALS OPEN HOUSE:

It's been over two decades (much too long!) that the club has had an outing to Pam Erikson's display garden and nursery. After her presentation tonight, it is anticipated that a hoard will want to visit it. Consulting with Pam, she suggested that we should visit during her annual Open House on July 6 & 7 as there will be live music and other vendors on site. A dilemma: which day? Saturday would probably be best if planning on purchasing but there is bus of garden patrons visiting on Sat. Sunday may be better crowd-wise. We anticipate still loads to buy on Sunday. The decision: why not either day!? Go the day that works best for you. Carpooling is strongly suggested. It is a social outing. Also, although it is a rural area, it is residential and parking could be limited. There is a sign-up sheet tonight (fireplace table) on which to say which day you would like to attend and whether you can give someone a ride or will need a ride. We ask that you look at the sheet to match up your own rides. As the main club tour/outing organizers will be out of town, Audrey (who definitely will be here!) will have the sign-up sheet. Contact her if you want to add your name to the list (or take it off) or are looking for a ride or can give a ride. If you get no answer when you phone, leave a message. Audrey will not be going on the tour. She will not be brokering rides.

Directions to the Erikson's:

Via Hwy 1: Take the 232 exit and turn south. Make sure you stay on 232, a bit of a jog to the left, and do not follow the curved road which is Hwy 10. Follow 232 St south until 56 Ave (golf course on your left), turn left. Follow 56 Ave until 248 St, turn right. Follow 248 St until 52 Ave (turkey farm), turn right. At 246 St, turn left and left again at 51 Ave. The gardens are the 2nd house on your right. Park roadside.

Via Fraser Hwy: Follow Fraser Hwy through Langley city and when you get to 248 St, turn left (north). At 52 Ave (turkey farm), turn left. Then left again at 246 St and left again at 51 Ave. The gardens are the 2nd house on your right. Park roadside.

TREASURER'S REPORT - May 2019

Total Revenue: \$6045.55
(incl. 5099.05 from Spring Plant Sale)
Total Expenses: \$1,367.22
See bulletin board for Ellen's report.

New Westminster Horticultural Society June 2019

THE NWHS POLLINATOR GARDEN IN SAPPERTON PARK:

It was a fantastic morning for planting a garden. The NWHS planting crew of seven arrived just as Martin, a New West Parks gardener, was unloading wheelbarrows of plants. Erika, the new head of all things horticulture within the city, was also in attendance and dug right in. In two and a half hours, the prepared bare site (except for the bee hotel in the middle) was transformed into a garden. First planted were perimeter wind-breaking shrubs (all flowering substitutes for boxwood). Once Martin positioned them, the digging started—actually in many cases, it was hacking at hardpan. One quality landscape rock excavated. Not to worry—it seems plants don't need to be completely planted in fertile loam. Gosh, it looked good even with only those shrubs. But Martin still had several crates of bee/butterfly attracting plants for us to position. He gave very informative little spiels about the reasons the plants were selected and let the crew decide on the locations. This planting was much easier. Wow!!! There it is—a completely planted pollinator garden! We had one butterfly check out the plants while work was being done. Even though we don't have a deed to signify that we own the garden, to us, it is the NWHS Pollinator Garden in Sapperton Park. We hope to include it in the July Garden Tour. The decision was made that for our Photo Contest, images taken of our pollinator garden can be included in the View of a NWHS Member's Garden category. Well done team!!

The Pollinator Garden Plant List:

All selected plants like full sun except for the lupin which can take a bit of shade. A mixture of blooming times was important to sustain the food supply for the bees & butterflies.

Perimeter Shrubs:

Osmanthus x burkwoodii
Ceanothus thyrsiflorus 'Victoria'
Ilex crenata
Ligustrum vulgare 'Atrovirens'

Tall plants:

Cardoon 7"
Veronicastrum virginianum 4-5"
Liatris spicata 'Floristan Violet' 30-36"
Lavandula x intermedia 'Phenomenal' 30"
Lavandula angustifolia 'Essence Purple' 30"
Phlox paniculata 'Blue Paradise' 24-36"
Rosmarinus officinalis 'Hill Hardy' 4-5"
Globe echinops 2-4"

Mid-height plants:

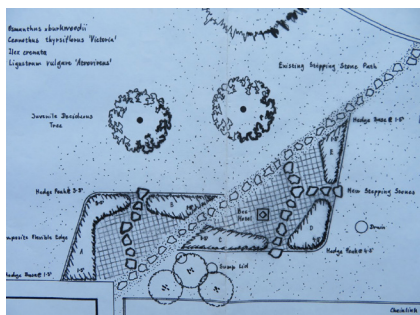
Monarda 'Grape Gumball' 20-24"
 Lupin, red
Perovskia atriplicifolia 'Blue Steel'
Agastache 'Kudos Red' 20"
Agastache 'Blue Boa' 20-24"
Lavandula "Big Time Blue' 20"
Nepeta faassenii 'Cat's Meow' 17-20"
Salvia nemorosa 'Cardonna' 24"
Lavandula x intermedia 'Grosso' 12-18"

Short plants:

Gaura lindeheimeri 'Rosyjane' 8-12"
Coreopsis x 'Darling Clementine' 8-10"
Nepeta faassenii 'Purrsian Blue Catmint' 14"
Lavandula angustifolia 'Wee One' 8-10"

Ground-covers:

Ajuga reptans 'Caitlin's Giant' 6"
 Red creeping thyme
 Woolly thyme
 Mother of thyme
 White creeping thyme



New Westminster Horticultural Society June 2019

NWHS GARDEN TOUR & POT-LUCK PICNIC:

Sat, July 13, 2019

How could a day go wrong with this combo: Good Gardens + Good Friends + Good Eats??? Well, with the guarantee of Good Weather, it would be a 100% absolutely superb day. Speaking of weather, the events of the day are both on "rain or shine". Rain will just require a bit more creativeness. Hey, we're gardeners...what's a little rain? The tour & picnic are both on the same day—tour in the afternoon, picnic following in the early evening. Partake in either or both. Your choice. On the other hand, if you decide not to join the group, you will be missing out.

THE TOUR:

We need gardens!!!! Please consider putting yours on the tour. We had a couple of potential gardens but they fell through—the timing just would not work. No—that is not exactly true. After planting the pollinating garden in Sapperton, there was discussion about having it on the tour. That means we have one. Anybody else in Sapperton want to be on the tour? One of our criteria is we will not visit a garden when the homeowner cannot be there. As mentioned before, there is no better incentive to get a gardening/landscaping project completed than to invite a group to view it. Half-completed is fine too as most of our gardens are in that state. Ideally, we would like gardens relatively close together so our afternoon is spent viewing rather than driving and parking. How about Massey Heights, Queens Park, Glenbrooke, Brow of the Hill, the West End?? Do you live in any of these areas? How about coming forward and volunteering your garden? Visit the fireplace table tonight and say "I would like to be on the tour". Thanks. We are looking for only 5-6 gardens. If members don't come forth by Sat, June 15, Audrey will be forced to look at non-member gardens to visit? Do you know of any? Please give Audrey a phone call or email. Thanks.

How our tour works: Each garden is open for 15-30 min (depending on complexity) in a set sequence. This enables garden hosts to join the tour and view the other gardens. Until all the gardens are confirmed and the driving/parking allowances between them determined, the exact tour starting time will not be known. It will probably be between 1 and 2pm. The tour finishes about 4pm, giving a half hour break

before the picnic. There is no sign-up sheet for the tour. It is open to all NWHS members and their adult friends (no kids, no pets please). We estimate 50-60 people will enjoy the tour. At the July meeting, the map and itinerary will be available. Your possession of the map is your tour ticket. If you are unable to attend the July meeting, contact Audrey for a copy. There will be no electronic version. Carpooling for the tour is highly recommended.



THE POT-LUCK PICNIC:

We do have a site for the picnic: it is the Barnes' back garden and decks (117 Seventh Ave). Audrey's neighbours would love it if you carpooled. The picnic is casual. No dress code—but if you do have your hat from the 85th Anniversary Party, why not wear it. It starts at 4:30 and finishes about 7pm. It is primarily for members and their families. That said, although kids are welcome, it has become adult oriented. No pets please. Feel free to bring along a couple of non-NWHS friends.

Sign-up Sheet: Unlike for the tour, there is a sign-up sheet for the picnic. The crucial data we ask from you: name, phone number, the number of people in your party and the pot-luck dish you will be contributing. When you indicate your dish, give some details eg. instead of just "salad", specify the kind of salad. The club looks after beverages; water, coffee, tea, punch, wine. The sign-up sheet is at the fireplace table tonight and with Audrey after tonight. If your plans change prior to the picnic, please tell Audrey. Knowing the number to expect really does make setting up tables and chairs much easier.



WATERING RESTRICTIONS:

Allowable lawn sprinkling times:

Even numbered homes:

4-9am, Wed & Sat

Odd numbered homes:

4-9am, Thurs & Sun

Watering trees, shrubs & flowers with a sprinkler can be done any day but only 4-9am.

CONTACTS:

Lorna Cloutier: President
604-524-1942 or
lorna@newwesthortsociety.org

Diane Perry: Vice-President,
Refreshments
diane@newwesthortsociety.org

Ellen Berg: Treasurer
604-525-7827 or
ellen@newwesthortsociety.org

Audrey Barnes: Contests, show,
tour & picnic, Erikson's Daylilies
604-526-8284 (before 8pm) or
audrey@newwesthortsociety.org
117 - 7th Ave.

Merril Hall: Sketching group
604-790-1321 or
merril@newwesthortsociety.org